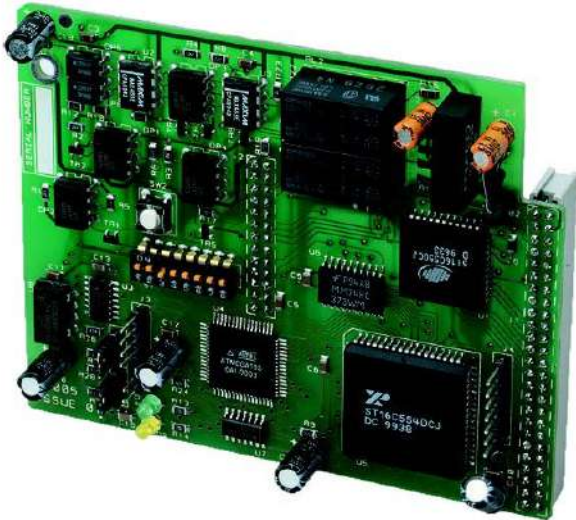


AS1170-00 SUPREME E-NET CARD



Standard Features

- Up to 64 nodes
- High integrity protocol when wired Class A
- Fully secure against short or open circuit faults
- Simple two-wire loop connection
- Supports open ended networks for retrofit applications
- Network wide test and disablement functions
- Network wide cause and effect logic
- Flexible configuration options
- Panels configurable to act on network events or not as required



Product Overview

The flexibility of the Supreme system can be further enhanced by connecting control panels and repeaters together using a high integrity network. A simple two-wire connection between each panel allows events to be transmitted to other parts of the system to provide indication or control on a system wide basis.

Using the Loop Explorer configuration software, up to 64 nodes can be programmed to respond in a variety of ways to any system events as required.

This flexibility extends the comprehensive cause and effect programming capability of Supreme control panels to the entire network allowing actions, test modes or disablements to be started from any point. The fault tolerance of the network is such that any single open or short circuit fault will not result in any loss of information. Multiple faults are isolated and the network breaks into smaller networks which continue to work autonomously.

Technical Specifications

Protocol	RS485
Connection	Two Wire Loop
Current Consumption	40mA
Integrity	Full isolation of faulty nodes or wiring segments
Indicators	Data In and Data Out communications status
Cable Type	Belden 9271, Belden 9860, FP200 Gold
Compatible Panels	Supreme / Supreme RS

